



Our Presence In: WASHINGTON, D.C.

Our People

Caterpillar has roughly 20 full-time employees and 10 retirees across Washington, D.C.

We provide employees with a comprehensive wage and benefits package in an inclusive work environment with opportunities for development.

Washington, D.C. at a Glance*

Full-time Employees: **20**

Retirees: **10**

Dealer: **Alban CAT**

Number of suppliers: **80**



* Caterpillar facilities only
(does not include dealer or supplier locations)

Building a Better World

Since its inception in 1952, the Caterpillar Foundation has contributed more than \$740 million in global communities to improve the lives of people around the world through investments in human and sustainable infrastructure. Together, Caterpillar and the Caterpillar Foundation are helping to build stronger individuals, stronger communities and stronger economies.

We're proud to be an active leader in communities where we live and work, supporting organizations like the United Way and the American Red Cross. In 2018, approximately \$50,000 in Foundation giving** and \$40,000 in employee/retiree giving reached worthy organizations across Washington, D.C.

** Including Caterpillar Matching Gift Programs

Our Reach

We are proud of our reach throughout the district. Our dealers and other distribution channel members serve as a critical link between our company and our customers worldwide. Working together with our dealers, Caterpillar strives to build and maintain long-lasting customer relationships through value-added services designed to increase productivity and make customers more successful.

Caterpillar's supplier network also helps us build and maintain longstanding customer relationships, supplying productive and reliable solutions and providing the highest possible level of product support. We have approximately 80 suppliers across the district, generating additional jobs and growth.

Data as of December 31, 2018.



For more than 90 years, Caterpillar Inc. has been making sustainable progress possible and driving positive change on every continent. Customers turn to Caterpillar to help them develop infrastructure, energy and natural resource assets. With 2018 sales and revenues of \$54.7 billion, Caterpillar is the world's leading manufacturer of construction and mining equipment, diesel and natural gas engines, industrial gas turbines and diesel-electric locomotives. The company principally operates through its three product segments – Resource Industries, Construction Industries and Energy & Transportation – and also provides financing and related services through its Financial Products segment.

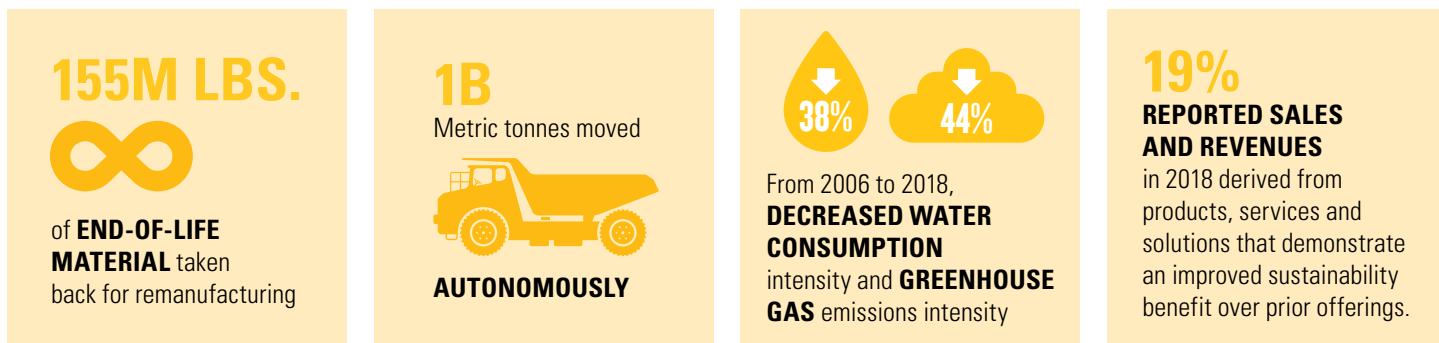
Worldwide Caterpillar numbers:	Total US Facilities	Total Facilities Outside US	Total		
Headquarters & Key Offices	5	5	10	Full-time Employees:	104,000
Parts Distribution Centers	10	11	21	Dealers:	168 in 193 countries
Reman and Components	12	13	25	Caterpillar Foundation Giving:	\$27 million
Manufacturing	38	57	95	Number of Suppliers:	28,000
Total	65	86	151		

Data as of December 31, 2018.

SUSTAINABILITY IN ACTION

At Caterpillar, sustainability is our commitment to building a better world. It is part of who we are and what we do every single day. We recognize progress involves a balance of environmental stewardship, social responsibility and economic growth. Our vision is a world in which all people's basic needs – such as shelter, clean water, sanitation, food and reliable power – are fulfilled in a sustainable way and a company that improves the quality of the environment and the communities where we live and work.

To learn more, read our Sustainability Report at reports.caterpillar.com/sr/



Brand Portfolio

Built on decades of performance, our portfolio of brands speaks to quality, reliability and an assurance of the finest in design, engineering and customer service.



© 2019 Caterpillar Inc. All Rights Reserved. CAT, CATERPILLAR, LET'S DO THE WORK, YELLOWMARK their respective logos, "Caterpillar Yellow", the "Power Edge" and Cat "Modern Hex" trade dress, are trademarks of Caterpillar Inc. MaK and the MaK stylized logo are trademarks of Caterpillar Motoren GmbH & Co. KG. PROGRESS RAIL is a trademark of Progress Rail Services Corporation. SOLAR is a trademark of Solar Turbines Incorporated. PERKINS, Perkins symbol 82 and Perkins stylized logo are trademarks of Perkins Holdings Limited. FG WILSON and the "globe" design are trademarks of Caterpillar (NI) Limited. MWM and the MWM stylized Logo are trademarks of Caterpillar Energy Solutions GmbH. SEM and the SEM stylized logo are trademarks of Caterpillar (Qingzhou) Ltd. All of the aforesaid, together with respective corporate and product identity used herein, may not be used without permission.

